

AREA Series SPORTS FLOODLIGHT



PHILIPS LED 5700K white
w/ optical stadium area lens

800W220-240V
SOLI800MH-AREA

Soli Lighting offers an affordable LED flood lighting solution to the customer for both high mast area, seaport, airport and stadium lighting applications. It offers 4 housing sizes and a range of beam optics to fully cater to different road configurations and conditions. It is designed to achieve better light uniformity and maximum illumination and right angle, while ensuring sufficient light/lux on the area. Extrusion aluminum housing and PHILIPS LUMILEDS & PHILIPS DRIVERS platforms ensures long lifetime and reliability. Soli Lighting AREA Series offers up to 50% of energy savings when compared to conventional lamp systems.

Product data

General Information

Light source color	white
Driver/power unit/transformer	Philips
Driver included	Yes
Protection class IEC	Safety class I
CE mark	CE mark
ENEC mark UL mark	Driver
Constant light output	Yes

Operating and Electrical

Input Voltage	85-265 V
Input Frequency	50 to 60 Hz
Power Factor (Nom)	0.95 (nominal power)
Standards	EN60598-2-5 & EN60598-1

Controls and Dimming

Dimmable	No
----------	----

Mechanical and Housing

Housing Material	Aluminum
Optic material	Area Lens
Fixation material	Aluminum/Steel

Approval and Application

Cabling Ingress protection code	IP66 [Dust-protected, jet-proof]
Mech. impact protection code	IK09 [vandal-protected]
Warranty	2-5 Years

Initial Performance (IEC Compliant)

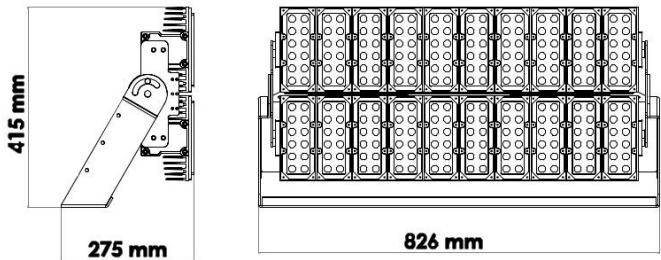
Initial luminous flux (light source)	120000lm
Initial LED luminaire flux&efficacy	150lm/W
Init. Corr. Color Temperature	5700K



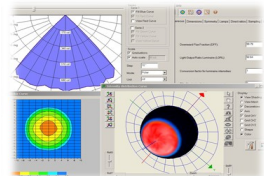
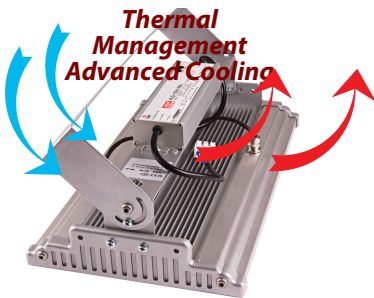
SOLi-AREA800P

Initial input power	800W
Over Time Performance (IEC Compliant)	
Median useful life L70B50	50000 h
Application Conditions	
Ambient temperature range	-30 to +65 °C
Average ambient temperature	25 °C
Product Data	
Full product code	AREA800P-220-5700

Order product name	AREA800P-220-5700
Order code	SOLi800MH-AREA
Numerator - Quantity Per Pack	1
Numerator - Packs per outer box	1
Material SKU Nr.	800P-220-5700
Net Weight (Piece)	25.00 kg



AREA800P 220V 5700K



© 1984-2026 Soli Lighting. All rights reserved. Soli Lighting reserves the right to make changes in specifications and/or to discontinue any product at any time without notice or obligation and will not be liable for any consequences resulting from the use of this publication.



Some references

